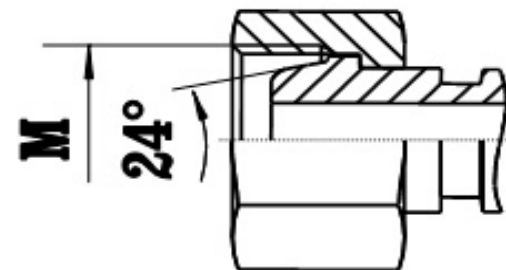




DKL

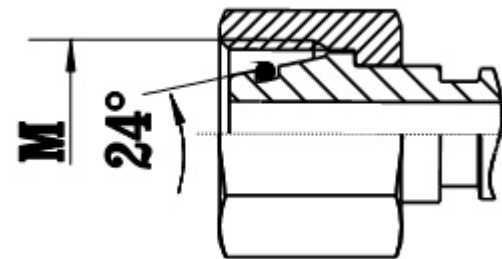


NAZIVNA MERA

mm	col	navoj	0°	45°	90°
5	3/16'	M12X1.5	DKL 05 M12x1.5	DKL 05 M12x1.5-45	DKL 05 M12x1.5-90
6	1/4"	M14X1.5	DKL 06 M14x1.5	DKL 06 M14x1.5-45	DKL 06 M14x1.5-90
8	5/16'	M16X1.5	DKL 08 M16x1.5	DKL 08 M16x1.5-45	DKL 08 M16x1.5-90
10	3/8'	M18X1.5	DKL 10 M18x1.5	DKL 10 M18x1.5-45	DKL 10 M18x1.5-90
12	1/2'	M22X1.5	DKL 12 M22x1.5	DKL 12 M22x1.5-45	DKL 12 M22x1.5-90
16	5/8'	M26X1.5	DKL 16 M26x1.5	DKL 16 M26x1.5-45	DKL 16 M26x1.5-90
20	3/4'	M30X2	DKL 20 M30x2	DKL 20 M30x2-45	DKL 20 M30x2-90
25	1'	M36X2	DKL 25 M36x2	DKL 25 M36x2-45	DKL 25 M36x2-90
32	1 1/4'	M45X2	DKL 32 M45x2	DKL 32 M45x2-45	DKL 32 M45x2-90
40	1. 1/2'	M52X2	DKL 40 M52x2	DKL 40 M52x2-45	DKL 40 M52x2-90



DKOL

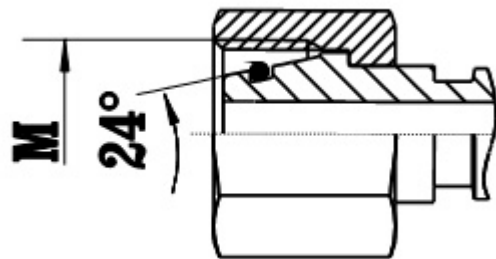


NAZIVNA MERA

mm	col	navoj	0°	45°	90°
5	3/16'	M12X1.5	DKOL 05 M12x1.5	DKOL 05 M12x1.5-45	DKOL 05 M12x1.5-90
6	1/4"	M14X1.5	DKOL 06 M14x1.5	DKOL 06 M14x1.5-45	DKOL 06 M14x1.5-90
8	5/16'	M16X1.5	DKOL 08 M16x1.5	DKOL 08 M16x1.5-45	DKOL 08 M16x1.5-90
10	3/8'	M18X1.5	DKOL 10 M18x1.5	DKOL 10 M18x1.5-45	DKOL 10 M18x1.5-90
12	1/2'	M22X1.5	DKOL 12 M22x1.5	DKOL 12 M22x1.5-45	DKOL 12 M22x1.5-90
16	5/8'	M26X1.5	DKOL 16 M26x1.5	DKOL 16 M26x1.5-45	DKOL 16 M26x1.5-90
20	3/4'	M30X2	DKOL 20 M30x2	DKOL 20 M30x2-45	DKOL 20 M30x2-90
25	1'	M36X2	DKOL 25 M36x2	DKOL 25 M36x2-45	DKOL 25 M36x2-90
32	1 1/4'	M45X2	DKOL 32 M45x2	DKOL 32 M45x2-45	DKOL 32 M45x2-90
40	1. 1/2'	M52X2	DKOL 40 M52x2	DKOL 40 M52x2-45	DKOL 40 M52x2-90

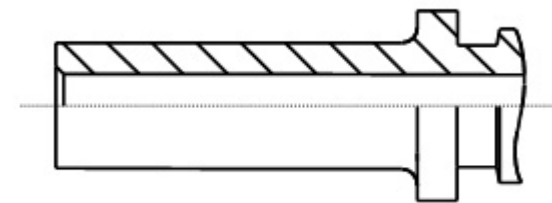


DKOS



NAZIVNA MERA

mm	col	navoj	0°	45°	90°
5	3/16'	M16X1.5	DKOS 05 M16x1.5	DKOS 05 M16x1.5-45	DKOS 05 M16x1.5-90
6	1/4"	M18X1.5	DKOS 06 M18x1.5	DKOS 06 M18x1.5-45	DKOS 06 M18x1.5-90
8	5/16'	M20X1.5	DKOS 08 M20x1.5	DKOS 08 M20x1.5-45	DKOS 08 M20x1.5-90
10	3/8'	M22X1.5	DKOS 10 M22x1.5	DKOS 10 M22x1.5-45	DKOS 10 M22x1.5-90
12	1/2'	M24X1.5	DKOS 12 M24x1.5	DKOS 12 M24x1.5-45	DKOS 12 M24x1.5-90
16	5/8'	M30X1.5	DKOS 16 M30x2	DKOS 16 M30x2-45	DKOS 16 M30x2-90
20	3/4'	M36X2	DKOS 20 M36x2	DKOS 20 M36x2-45	DKOS 20 M36x2-90
25	1'	M42X2	DKOS 25 M42x2	DKOS 25 M42x2-45	DKOS 25 M42x2-90
32	1 1/4'	M52X2	DKOS 32 M52x2	DKOS 32 M52x2-45	DKOS 32 M52x2-90



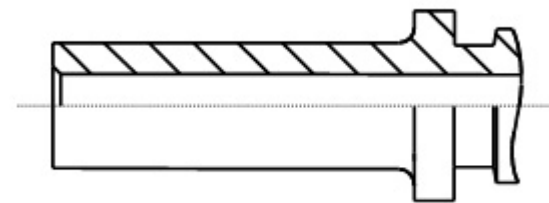
BEL

NAZIVNA MERA

mm	col	F	0°	45°	90°
5	3/16'	06L	BEL 05	BEL 05-45	BEL 05-90
6	1/4"	08L	BEL 06	BEL 06-45	BEL 06-90
8	5/16'	10L	BEL 08	BEL 08-45	BEL 08-90
10	3/8'	12L	BEL 10	BEL 10-45	BEL 10-90
12	1/2'	15L	BEL 12	BEL 12-45	BEL 12-90
16	5/8'	18L	BEL 16	BEL 16-45	BEL 16-90
20	3/4'	22L	BEL 20	BEL 20-45	BEL 20-90
25	1'	28L	BEL 25	BEL 25-45	BEL 25-90
32	1 1/4'	35L	BEL 32	BEL 32-45	BEL 32-90
40	1. 1/2'	42L	BEL 40	BEL 40-45	BEL 40-90
50	2'				



BES

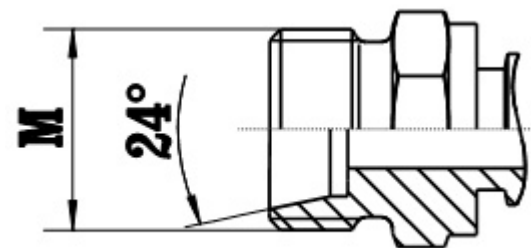


NAZIVNA MERA

mm	col	F	0°	45°	90°
5	3/16'	08S	BES 05	BES 05-45	BES 05-90
6	1/4"	10S	BES 06	BES 06-45	BES 06-90
8	5/16'	12S	BES 08	BES 08-45	BES 08-90
10	3/8'	14S	BES 10	BES 10-45	BES 10-90
12	1/2'	16S	BES 12	BES 12-45	BES 12-90
16	5/8'	20S	BES 16	BES 16-45	BES 16-90
20	3/4'	25S	BES 20	BES 20-45	BES 20-90
25	1'	30S	BES 25	BES 25-45	BES 25-90
32	1 1/4'	38S	BES 32	BES 32-45	BES 32-90
50	2'		BES 40	BES 40-45	BES 40-90



CEL

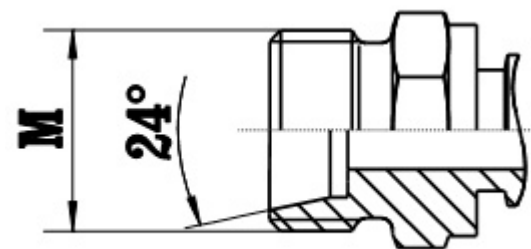


NAZIVNA MERA

mm	col	navoj	0°	45°	90°
5	3/16'	M12X1.5	CEL 05 M12x1.5		
6	1/4"	M14X1.5	CEL 06 M14x1.5		
8	5/16'	M16X1.5	CEL 08 M16x1.5		
10	3/8'	M18X1.5	CEL 10 M18x1.5		
12	1/2'	M22X1.5	CEL 12 M22x1.5		
16	5/8'	M26X1.5	CEL 16 M26x1.5		
20	3/4'	M30X2	CEL 20 M30x2		
25	1'	M36X2	CEL 25 M36x2		
32	1 1/4'	M45X2	CEL 32 M45x2		
40	1. 1/2'	M52X2	CEL 40 M52x2		



CES



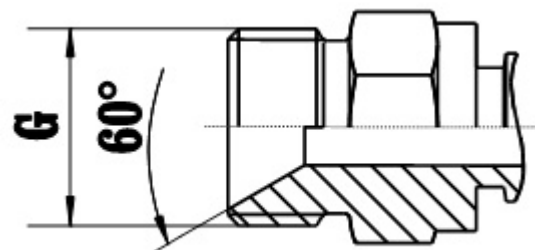
NAZIVNA MERA

mm	col	navoj	0°	45°	90°
5	3/16'	M16X1.5	CES 05 M16x1.5		
6	1/4"	M18X1.5	CES 06 M18x1.5		
8	5/16'	M20X1.5	CES 08 M20x1.5		
10	3/8'	M22X1.5	CES 10 M22x1.5		
12	1/2'	M24X1.5	CES 12 M24x1.5		
16	5/8'	M30X1.5	CES 16 M30x2		
20	3/4'	M36X2	CES 20 M36x2		
25	1'	M42X2	CES 25 M42x2		
32	1 1/4'	M52X2	CES 32 M52x2		



AGR

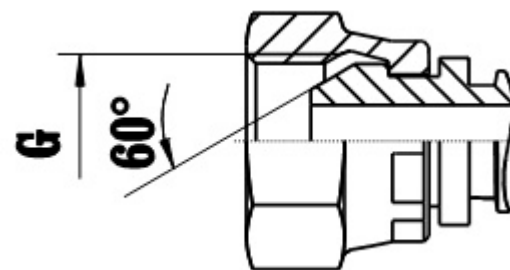
NAZIVNA MERA



mm	col	navoj	0°	45°	90°
5	3/16'	G1/8"	AGR 05 1/8		
6	1/4"	G1/4"	AGR 06 1/4		
8	5/16'				
10	3/8'	G3/8"	AGR 10 3/8		
12	1/2'	G1/2"	AGR 12 1/2		
16	5/8'	G5/8"	AGR 16 5/8		
20	3/4'	G3/4"	AGR 20 3/4		
25	1'	G1"	AGR 25 1		
32	1 1/4'	G1.1/4"	AGR 32 1 1/4		
40	1. 1/2'	G1.1/2"	AGR 40 1 1/2		
50	2'	G2'	AGR 50 2		



DKR

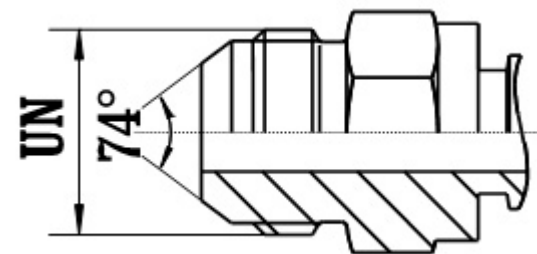


NAZIVNA MERA

mm	col	navoj	0°	45°	90°
5	3/16'	G1/8"	DKR 05 1/8	DKR 05 1/8-45	DKR 05 1/8-90
6	1/4"	G1/4"	DKR 06 1/4	DKR 06 1/4-45	DKR 06 1/4-90
8	5/16'				
10	3/8'	G3/8"	DKR 10 3/8	DKR 10 3/8-45	DKR 10 3/8-90
12	1/2'	G1/2"	DKR 12 1/2	DKR 12 1/2-45	DKR 12 1/2-90
16	5/8'	G5/8"	DKR 16 5/8	DKR 16 5/8-45	DKR 16 5/8-90
20	3/4'	G3/4"	DKR 20 3/4	DKR 20 3/4-45	DKR 20 3/4-90
25	1'	G1"	DKR 25 1	DKR 25 1-45	DKR 25 1-90
32	1 1/4'	G1.1/4"	DKR 32 1 1/4	DKR 32 1 1/4-45	DKR 32 1 1/4-90
40	1. 1/2'	G1.1/2"	DKR 40 1 1/2	DKR 40 1 1/2-45	DKR 40 1 1/2-90
50	2'	G2'	DKR 50 2	DKR 50 2-45	DKR 50 2-90



AGJ

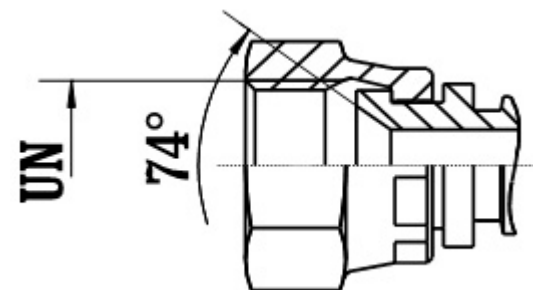


NAZIVNA MERA

mm	col	navoj	0°	45°	90°
5	3/16"				
6	1/4"	7/16"-20	AGJ 06 7/16		
8	5/16"	1/2"-20	AGJ 08 1/2		
10	3/8"	9/16"-18	AGJ 10 9/16		
12	1/2"	3/4"-16	AGJ 12 3/4		
16	5/8"	7/8"-14	AGJ 16 7/8		
20	3/4"	1.1/16"-12	AGJ 20 1 1/16		
25	1"	1.5/16"-12	AGJ 25 1 5/16		
32	1 1/4"	1.5/8"-12	AGJ 32 1 5/8		
40	1. 1/2"	1.7/8"-12	AGJ 40 1 1/2		
50	2"	2.1/2"-12	AGJ 50 2 1/2		



DKJ

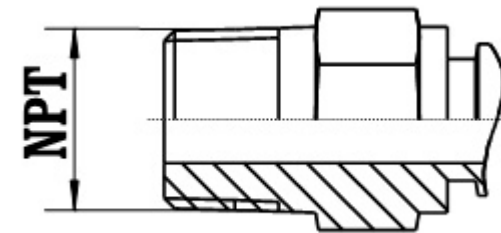


NAZIVNA MERA

mm	col	navoj	0°	45°	90°
5	3/16"				
6	1/4"	7/16"-20	DKJ 06 7/16	DKJ 06 7/16-45	DKJ 06 7/16-90
8	5/16"	1/2"-20	DKJ 08 1/2	DKJ 08 1/2-45	DKJ 08 1/2-90
10	3/8"	9/16"-18	DKJ 10 9/16	DKJ 10 9/16-45	DKJ 10 9/16-90
12	1/2"	3/4"-16	DKJ 12 3/4	DKJ 12 3/4-45	DKJ 12 3/4-90
16	5/8"	7/8"-14	DKJ 16 7/8	DKJ 16 7/8-45	DKJ 16 7/8-90
20	3/4"	1.1/16"-12	DKJ 20 1 1/16	DKJ 20 1 1/16-45	DKJ 20 1 1/16-90
25	1"	1.5/16"-12	DKJ 25 1 5/16	DKJ 25 1 5/16-45	DKJ 25 1 5/16-90
32	1 1/4"	1.5/8"-12	DKJ 32 1 5/8	DKJ 32 1 5/8-45	DKJ 32 1 5/8-90
40	1. 1/2"	1.7/8"-12	DKJ 40 1 1/2	DKJ 40 1 1/2-45	DKJ 40 1 1/2-90
50	2"	2.1/2"-12	DKJ 50 2 1/2	DKJ 50 2 1/2-45	DKJ 50 2 1/2-90

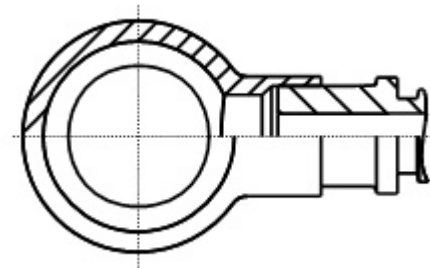


AGN



NAZIVNA MERA

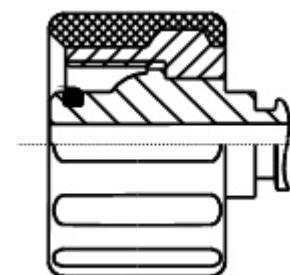
mm	col	navoj	NAZIVNA MERA		
			0°	45°	90°
5	3/16'	1/8"-27	AGN 05 1/8		
6	1/4"	1/4"-18	AGN 06 1/4		
8	5/16'				
10	3/8'	3/8"-18	AGN 10 3/8		
12	1/2'	1/2"-14	AGN 12 1/2		
16	5/8'				
20	3/4'	3/4"-14	AGN 20 3/4		
25	1'	1"-11.1/2	AGN 25 1		
32	1 1/4'	1.1/4"-11.1/2	AGN 32 1 1/4		
40	1. 1/2'	1.1/2"-11.1/2	AGN 40 1 1/2		



RN

NAZIVNA MERA

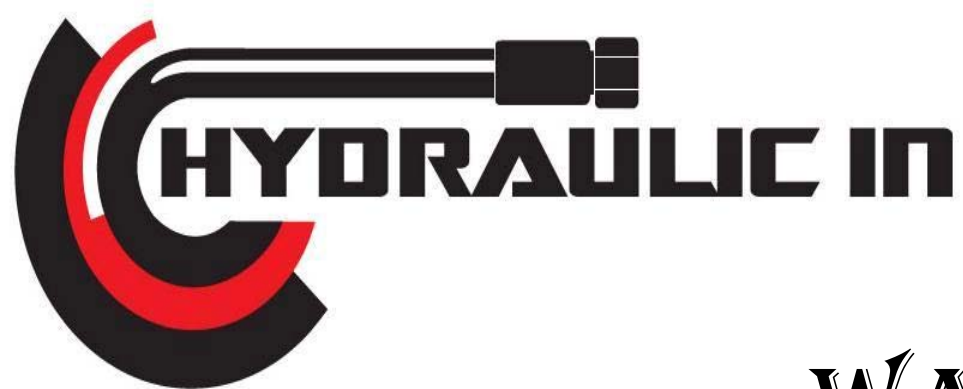
mm	col	Rupa Fi	0°	45°	90°
5	3/16'	10mm	RN 05-10		
6	1/4"	12mm	RN 06-12		
8	5/16'	14mm	RN 08-14		
10	3/8'	16mm	RN 10-16		
12	1/2'	18mm	RN 12-18		
16	5/8'	22mm	RN 16-22		
20	3/4'	26mm	RN 20-26		
25	1'	30mm	RN 25-30		



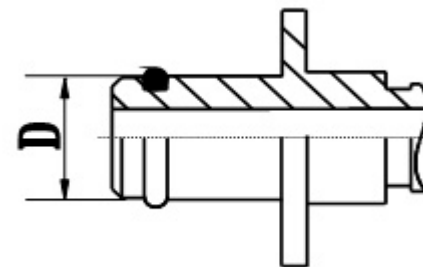
WAP

NAZIVNA MERA

mm	col	Navoj	0°	45°	90°
5	3/16'				
6	1/4"	M22X1.5	DKOL 06	M22x1.5-WAP	
8	5/16'	M22X1.5	DKOL 08	M22x1.5-WAP	
10	3/8'	M22X1.5	DKOL 10	M22x1.5-WAP	
12	1/2'				
16	5/8'				
20	3/4'				
25	1'				



WAP

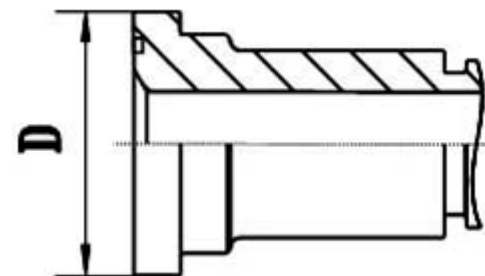


NAZIVNA MERA

mm	col	D	0°	45°	90°
5	3/16'				
6	1/4''	10mm	CEL 06-WAP		
8	5/16'	10mm	CEL 08-WAP		
10	3/8'	10mm	CEL 10-WAP		
12	1/2'				
16	5/8'				
20	3/4'				
25	1'				



SFL

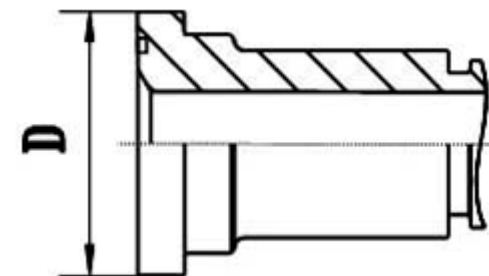


NAZIVNA MERA

mm	col	D	0°	45°	90°
5	3/16'				
6	1/4"				
8	5/16'				
10	3/8'				
12	1/2'	30.2	SFL 12 30.2	SFL 12 30.2-45	SFL 12 30.2-90
16	5/8'				
20	3/4'	38.1	SFL 20 38.1	SFL 20 38.1-45	SFL 20 38.1-90
25	1'	44.4	SFL 25 44.4	SFL 25 44.4-45	SFL 25 44.4-90
32	1 1/4'	50.8	SFL 32 50.8	SFL 32 50.8-45	SFL 32 50.8-90
40	1. 1/2'	60.3	SFL 40 60.3	SFL 40 60.3-45	SFL 40 60.3-90
50	2'	71.4	SFL 50 71.4	SFL 50 71.4-45	SFL 50 71.4-90



SFS

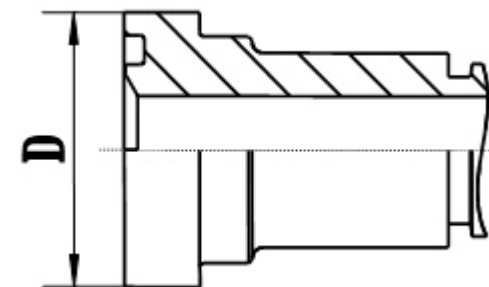


NAZIVNA MERA

mm	col	D	0°	45°	90°
5	3/16'				
6	1/4"				
8	5/16'				
10	3/8'				
12	1/2'	31.8	SFS 12 38.1	SFS 12 38.1-45	SFS 12 38.1-90
16	5/8'				
20	3/4'	41.3	SFS 20 41.3	SFS 20 41.3-45	SFS 20 41.3-90
25	1'	47.6	SFS 25 47.6	SFS 25 47.6-45	SFS 25 47.6-90
32	1 1/4'	54.0	SFS 32 54	SFS 32 54-45	SFS 32 54-90
40	1. 1/2'	63.5	SFS 40 63.5	SFS 40 63.5-45	SFS 40 63.5-90
50	2'	79.4	SFS 50 79.4	SFS 50 79.4-45	SFS 50 79.4-90



CAT

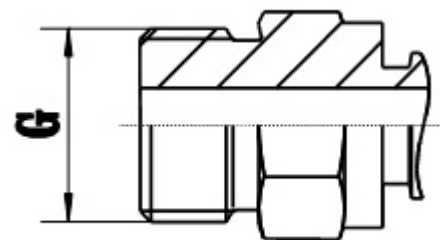


NAZIVNA MERA

mm	col	D	0°	45°	90°
5	3/16'				
6	1/4"				
8	5/16'				
10	3/8'				
12	1/2'				
16	5/8'				
20	3/4'	41.3	CAT 20 41.3	CAT 20 41.3-45	CAT 20 41.3-90
25	1'	47.6	CAT 25 47.6	CAT 25 47.6-45	CAT 25 47.6-90
32	1 1/4'	54.0	CAT 32 54	CAT 32 54-45	CAT 32 54-90
40	1. 1/2'	63.5	CAT 40 63.5	CAT 40 63.5-45	CAT 40 63.5-90
50	2'	79.4	CAT 50 79.4	CAT 50 79.4-45	CAT 50 79.4-90



AGR-FLD

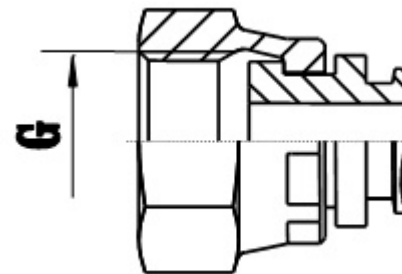


NAZIVNA MERA

mm	col	navoj	0°	45°	90°
5	3/16'	G1/8"	AGR-FLD 05 1/8		
6	1/4"	G1/4"	AGR-FLD 06 1/4		
8	5/16'				
10	3/8'	G3/8"	AGR-FLD 10 3/8		
12	1/2'	G1/2"	AGR-FLD 12 1/2		
16	5/8'	G5/8"	AGR-FLD 16 5/8		
20	3/4'	G3/4"	AGR-FLD 20 3/4		
25	1'	G1"	AGR-FLD 25 1		
32	1 1/4'	G1.1/4"	AGR-FLD 32 1 1/4		
40	1. 1/2'	G1.1/2"	AGR-FLD 40 1 1/2		
50	2'	G2'	AGR-FLD 50 2		



DKR-FLD



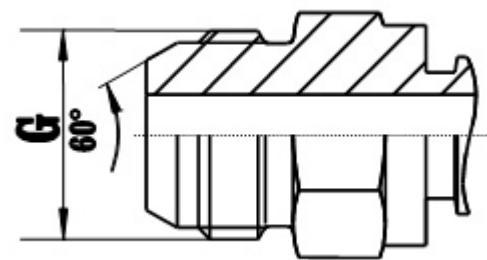
NAZIVNA MERA

mm	col	navoj	0°	45°	90°
5	3/16'	G1/8"	DKR-FLD 05 1/8	DKR-FLD 05 1/8-45	DKR-FLD 05 1/8-90
6	1/4"	G1/4"	DKR-FLD 06 1/4	DKR-FLD 06 1/4-45	DKR-FLD 06 1/4-90
8	5/16'				
10	3/8'	G3/8"	DKR-FLD 10 3/8	DKR-FLD 10 3/8-45	DKR-FLD 10 3/8-90
12	1/2'	G1/2"	DKR-FLD 12 1/2	DKR-FLD 12 1/2-45	DKR-FLD 12 1/2-90
16	5/8'	G5/8"	DKR-FLD 16 5/8	DKR-FLD 16 5/8-45	DKR-FLD 16 5/8-90
20	3/4'	G3/4"	DKR-FLD 20 3/4	DKR-FLD 20 3/4-45	DKR-FLD 20 3/4-90
25	1'	G1"	DKR-FLD 25 1	DKR-FLD 25 1-45	DKR-FLD 25 1-90
32	1 1/4'	G1.1/4"	DKR-FLD 32 1 1/4	DKR-FLD 32 1 1/4-45	DKR-FLD 32 1 1/4-90
40	1. 1/2'	G1.1/2"	DKR-FLD 40 1 1/2	DKR-FLD 40 1 1/2-45	DKR-FLD 40 1 1/2-90
50	2'	G2'	DKR-FLD 50 2	DKR-FLD 50 2-45	DKR-FLD 50 2-90

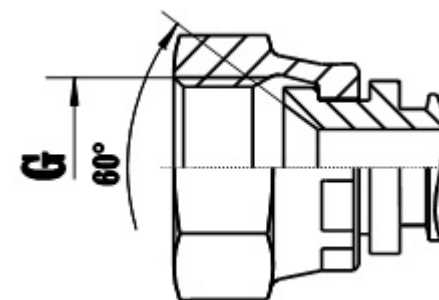


AGJR

NAZIVNA MERA



mm	col	navoj	0°	45°	90°
5	3/16'	G1/8"	AGJR 05 1/8		
6	1/4"	G1/4"	AGJR 06 1/4		
8	5/16'				
10	3/8'	G3/8"	AGJR 10 3/8		
12	1/2'	G1/2"	AGJR 12 1/2		
16	5/8'	G5/8"	AGJR 16 5/8		
20	3/4'	G3/4"	AGJR 20 3/4		
25	1'	G1"	AGJR 25 1		
32	1 1/4'	G1.1/4"	AGJR 32 1 1/4		
40	1. 1/2'	G1.1/2"	AGJR 40 1 1/2		
50	2'	G2'	AGJR 50 2		



DKJR

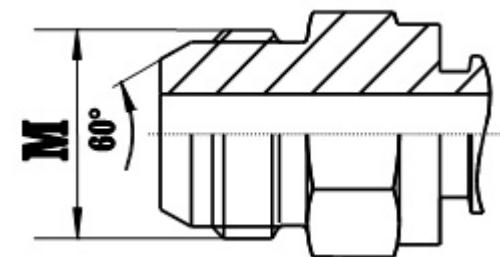
NAZIVNA MERA

mm	col	navoj	0°	45°	90°
5	3/16'	G1/8"	DKJR 05 1/8	DKJR 05 1/8-45	DKJR 05 1/8-90
6	1/4"	G1/4"	DKJR 06 1/4	DKJR 06 1/4-45	DKJR 06 1/4-90
8	5/16'				
10	3/8'	G3/8"	DKJR 10 3/8	DKJR 10 3/8-45	DKJR 10 3/8-90
12	1/2'	G1/2"	DKJR 12 1/2	DKJR 12 1/2-45	DKJR 12 1/2-90
16	5/8'	G5/8"	DKJR 16 5/8	DKJR 16 5/8-45	DKJR 16 5/8-90
20	3/4'	G3/4"	DKJR 20 3/4	DKJR 20 3/4-45	DKJR 20 3/4-90
25	1'	G1"	DKJR 25 1	DKJR 25 1-45	DKJR 25 1-90
32	1 1/4'	G1.1/4"	DKJR 32 1 1/4	DKJR 32 1 1/4-45	DKJR 32 1 1/4-90
40	1. 1/2'	G1.1/2"	DKJR 40 1 1/2	DKJR 40 1 1/2-45	DKJR 40 1 1/2-90
50	2'	G2'	DKJR 50 2	DKJR 50 2-45	DKJR 50 2-90

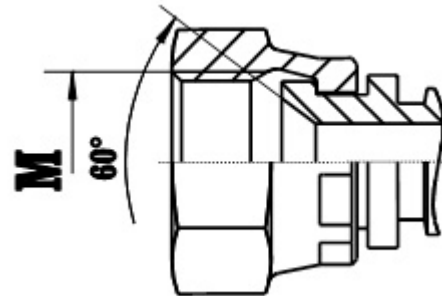


AGJM

NAZIVNA MERA



mm	col	navoj	0°	45°	90°
5	3/16'				
6	1/4"	M14X1.5	AGJM 06	M14x1.5	
8	5/16'	M16X1.5	AGJM 08	M16x1.5	
10	3/8'	M18X1.5	AGJM 10	M18x1.5	
12	1/2'	M22X1.5	AGJM 12	M22x1.5	
16	5/8'	M24X1.5	AGJM 16	M26x1.5	
20	3/4'	M30x1.5	AGJM 20	M30x1.5	
25	1'	M33x1.5	AGJM 25	M33x1.5	
32	1 1/4'				
40	1. 1/2'				
50	2'				



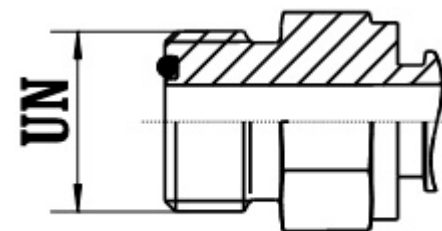
DKJM

NAZIVNA MERA

mm	col	navoj	0°	45°	90°
5	3/16'				
6	1/4"	M14X1.5	DKJM 06 M14x1.5	DKJM 06 M14x1.5-45	DKJM 06 M14x1.5-90
8	5/16'	M16X1.5	DKJM 08 M16x1.5	DKJM 08 M16x1.5-45	DKJM 08 M16x1.5-90
10	3/8'	M18X1.5	DKJM 10 M18x1.5	DKJM 10 M18x1.5-45	DKJM 10 M18x1.5-90
12	1/2'	M22X1.5	DKJM 12 M22x1.5	DKJM 12 M22x1.5-45	DKJM 12 M22x1.5-90
16	5/8'	M24X1.5	DKJM 16 M26x1.5	DKJM 16 M26x1.5-45	DKJM 16 M26x1.5-90
20	3/4'	M30x1.5	DKJM 20 M30x1.5	DKJM 20 M30x1.5-45	DKJM 20 M30x1.5-90
25	1'	M33x1.5	DKJM 25 M33x1.5	DKJM 25 M33x1.5-45	DKJM 25 M33x1.5-90
32	1 1/4'				
40	1. 1/2'				
50	2'				



ORS

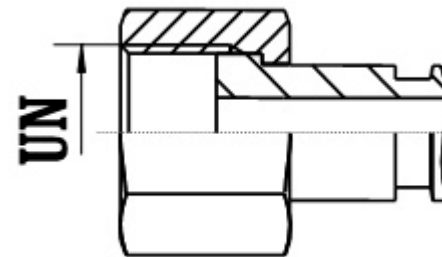


NAZIVNA MERA

mm	col	navoj	0°	45°	90°
5	3/16'				
6	1/4"	UN9/16"-18	ORS 06 9/16		
8	5/16'				
10	3/8'	UN11/16"-16	ORS 10 11/16		
12	1/2'	UN13/16"-16	ORS 12 13/16		
16	5/8'	1"-14	ORS 16 1		
20	3/4'	UN1.3/16"-12	ORS 20 1 3/16		
25	1'	UN1.7/16"-12	ORS 25 1 7/16		
32	1 1/4'	UN1.11/16"-12	ORS 32 1 11/16		
40	1. 1/2'	UN2"-12	ORS 40 2		
50	2'				



ORFS



NAZIVNA MERA

mm	col	navoj	0°	45°	90°
5	3/16'				
6	1/4"	UN9/16"-18	ORFS 06 9/16	ORFS 06 9/16-45	ORFS 06 9/16-90
8	5/16'				
10	3/8'	UN11/16"-16	ORFS 10 11/16	ORFS 10 11/16-45	ORFS 10 11/16-90
12	1/2'	UN13/16"-16	ORFS 12 13/16	ORFS 12 13/16-45	ORFS 12 13/16-90
16	5/8'	1"-14	ORFS 16 1	ORFS 16 1-45	ORFS 16 1-90
20	3/4'	UN1.3/16"-12	ORFS 20 1 3/16	ORFS 20 1 3/16-45	ORFS 20 1 3/16-90
25	1'	UN1.7/16"-12	ORFS 25 1 7/16	ORFS 25 1 7/16-45	ORFS 25 1 7/16-90
32	1 1/4'	UN1.11/16"-12	ORFS 32 1 11/16	ORFS 32 1 11/16-45	ORFS 32 1 11/16-90
40	1. 1/2'	UN2"-12	ORFS 40 2	ORFS 40 2-45	ORFS 40 2-90
50	2'				



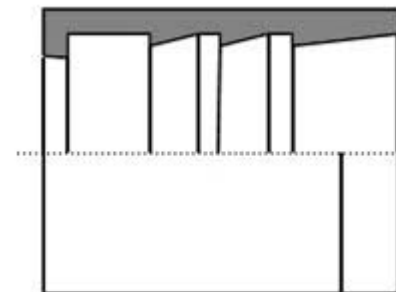
RIBLJA KOST

NAZIVNA MERA

mm	col	Za crevo	0°	45°	90°
5	3/16'				
6	1/4"	DN06	RIBLJA KOST F6		
8	5/16'	DN08	RIBLJA KOST F8		
10	3/8'	DN10	RIBLJA KOST F10		
12	1/2'	DN12	RIBLJA KOST F12		
16	5/8'	DN16	RIBLJA KOST F16		
20	3/4'	DN20	RIBLJA KOST F20		
25	1'	DN25	RIBLJA KOST F25		
32	1 1/4'	DN32	RIBLJA KOST F32		
40	1. 1/2'				
50	2'				



ČAURA 1SN

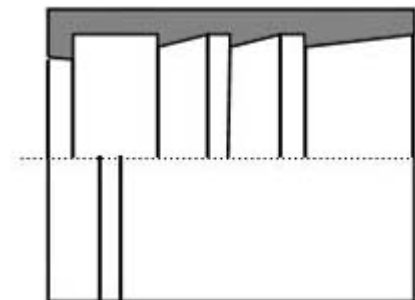


NAZIVNA MERA

mm	col	Za crevo	
5	3/16'	DN05	ČAURA 1 SN DN 05
6	1/4"	DN06	ČAURA 1 SN DN 06
8	5/16'	DN08	ČAURA 1 SN DN 08
10	3/8'	DN10	ČAURA 1 SN DN 10
12	1/2'	DN12	ČAURA 1 SN DN 12
16	5/8'	DN16	ČAURA 1 SN DN 16
20	3/4'	DN20	ČAURA 1 SN DN 20
25	1'	DN25	ČAURA 1 SN DN 25
32	1 1/4'	DN32	ČAURA 1 SN DN 32
40	1. 1/2'	DN40	ČAURA 1 SN DN 40
50	2'	DN50	ČAURA 1 SN DN 50



ČAURA 2SN

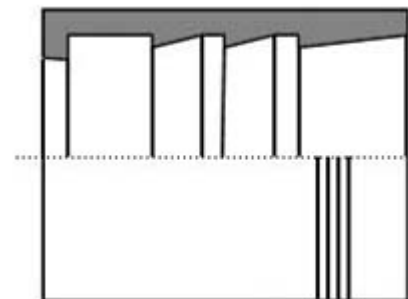


NAZIVNA MERA

mm	col	Za crevo	
5	3/16'	DN05	ČAURA 2 SN DN 05
6	1/4"	DN06	ČAURA 2 SN DN 06
8	5/16'	DN08	ČAURA 2 SN DN 08
10	3/8'	DN10	ČAURA 2 SN DN 10
12	1/2'	DN12	ČAURA 2 SN DN 12
16	5/8'	DN16	ČAURA 2 SN DN 16
20	3/4'	DN20	ČAURA 2 SN DN 20
25	1'	DN25	ČAURA 2 SN DN 25
32	1 1/4'	DN32	ČAURA 2 SN DN 32
40	1. 1/2'	DN40	ČAURA 2 SN DN 40
50	2'	DN50	ČAURA 2 SN DN 50



ČAURA 4SP

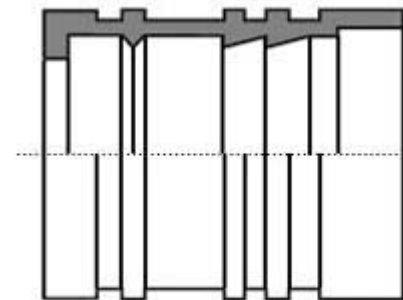


NAZIVNA MERA

mm	col	Za crevo	
5	3/16'	DN05	
6	1/4"	DN06	ČAURA 4 SP DN 06
8	5/16'	DN08	
10	3/8'	DN10	ČAURA 4 SP DN 10
12	1/2'	DN12	ČAURA 4 SP DN 12
16	5/8'	DN16	ČAURA 4 SP DN 16
20	3/4'	DN20	ČAURA 4 SP DN 20
25	1'	DN25	ČAURA 4 SP DN 25
32	1 1/4'	DN32	ČAURA 4 SP DN 32
40	1. 1/2'	DN40	ČAURA 4 SP DN 40
50	2'	DN50	ČAURA 4 SP DN 50



ČAURA 4SH

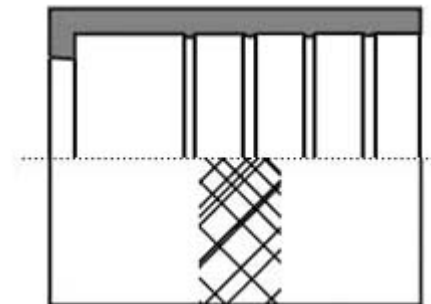


NAZIVNA MERA

mm	col	Za crevo	
5	3/16'	DN05	
6	1/4"	DN06	
8	5/16'	DN08	
10	3/8'	DN10	
12	1/2'	DN12	
16	5/8'	DN16	
20	3/4'	DN20	ČAURA 4 SH DN 20
25	1'	DN25	ČAURA 4 SH DN 25
32	1 1/4'	DN32	ČAURA 4 SH DN 32
40	1. 1/2'	DN40	ČAURA 4 SH DN 40
50	2'	DN50	ČAURA 4 SH DN 50

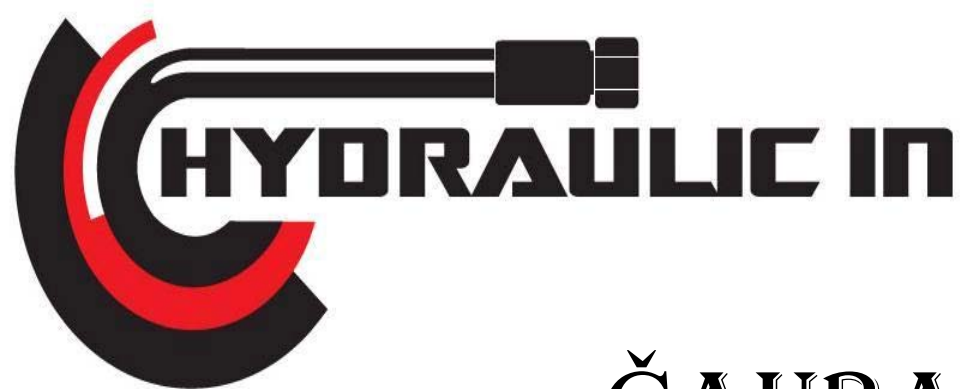


ČAURA MTH

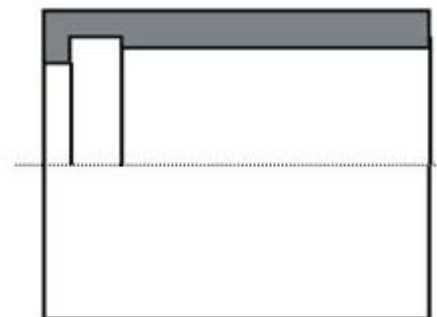


NAZIVNA MERA

mm	col	Za crevo	
5	3/16'	DN05	ČAURA 1 SN DN 05-NZ
6	1/4"	DN06	ČAURA 1 SN DN 06-NZ
8	5/16'	DN08	ČAURA 1 SN DN 08-NZ
10	3/8'	DN10	ČAURA 1 SN DN 10-NZ
12	1/2'	DN12	ČAURA 1 SN DN 12-NZ
16	5/8'	DN16	ČAURA 1 SN DN 16-NZ
20	3/4'	DN20	ČAURA 1 SN DN 20-NZ
25	1'	DN25	
32	1 1/4'	DN32	
40	1. 1/2'	DN40	
50	2'	DN50	



ČAURA PTFE



NAZIVNA MERA

mm	col	Za crevo	
5	3/16'	DN05	ČAURA PTFE 05
6	1/4"	DN06	ČAURA PTFE 06
8	5/16'	DN08	ČAURA PTFE 08
10	3/8'	DN10	ČAURA PTFE 10
12	1/2'	DN12	ČAURA PTFE 12
16	5/8'	DN16	ČAURA PTFE 16
20	3/4'	DN20	ČAURA PTFE 20
25	1'	DN25	ČAURA PTFE 25
32	1 1/4'	DN32	
40	1. 1/2'	DN40	
50	2'	DN50	



**DRZAC
PRIRUBNICE**

